

## BAFFLE CURTAIN INFORMATION

NAME: \_\_\_\_\_  
 COMPANY: \_\_\_\_\_  
 ADDRESS: \_\_\_\_\_  
 PHONE: \_\_\_\_\_ FAX: \_\_\_\_\_  
 EMAIL: \_\_\_\_\_

**BASIN INFORMATION:**

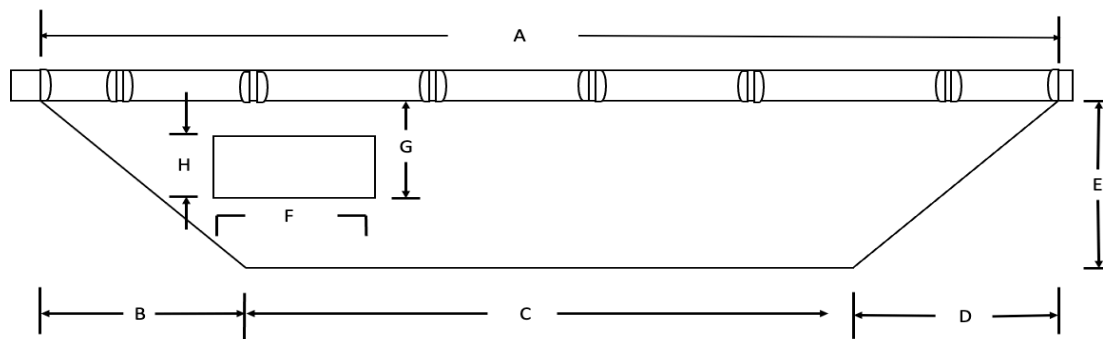
LENGTH: \_\_\_\_\_ WIDTH: \_\_\_\_\_ MINIMUM DEPTH: \_\_\_\_\_  
 MAXIMUM DEPTH: \_\_\_\_\_  
 DESIGN WIND SPEED AT BASIN: \_\_\_\_\_

**INFLOW INFORMATION:**

MAXIMUM FLOWRATE: \_\_\_\_\_ TEMPERATURE: \_\_\_\_\_ pH: \_\_\_\_\_  
 DOES WATER QUALITY REQUIRE METAL COMPONENTS IN STAINLESS STEEL?  
 GRADE 304 \_\_\_\_\_ GRADE 316 \_\_\_\_\_  
 NUMBER OF FLOW THRU WINDOWS \_\_\_\_\_ NOTE: THE GUIDELINE FOR  
 WINDOW FLOWRATE IS 30 GPM/FT<sup>2</sup>

**ANCHORING INFORMATION:**

BAFFLE IS FURNISHED WITH ANCHOR LINE ATTACHMENT POINTS AT ENDS  
 BETWEEN BAFFLE SECTIONS FOR LONG BAFFLES. MAXIMUM LENGTH OF A  
 SINGLE SECTION IS 135 FEET.



A \_\_\_\_\_ B \_\_\_\_\_ C \_\_\_\_\_ D \_\_\_\_\_ E \_\_\_\_\_ F \_\_\_\_\_ G \_\_\_\_\_ H \_\_\_\_\_

Please provide an overhead sketch of the basin, showing inlet and outlet locations.  
 NOTE: IF YOU REQUIRE ANCHORING HARDWARE, PLEASE PROVIDE DETAILS.

ENGINEERED TEXTILE PRODUCTS, INC. P.O. BOX 7474 MOBILE, AL 36670-0470  
 1-800-222-8277- FAX: 251 476-8001-EMAIL: [Tyies@etpinfo.com](mailto:Tyies@etpinfo.com)  
 -WEBSITE: [www.etpinfo.com](http://www.etpinfo.com)