

Baffle Curtain Information

NAME: \_\_\_\_\_  
COMPANY: \_\_\_\_\_  
ADDRESS: \_\_\_\_\_  
PHONE: \_\_\_\_\_ FAX: \_\_\_\_\_  
EMAIL: \_\_\_\_\_

**BASIN INFORMATION:**

LENGTH: \_\_\_\_\_ WIDTH: \_\_\_\_\_ MINIMUM DEPTH: \_\_\_\_\_ MAXIMUM DEPTH: \_\_\_\_\_  
DESIGN WIND SPEED AT BASIN: \_\_\_\_\_

**INFLOW INFORMATION:**

MAXIMUM FLOWRATE: \_\_\_\_\_ TEMPERATURE: \_\_\_\_\_ pH: \_\_\_\_\_

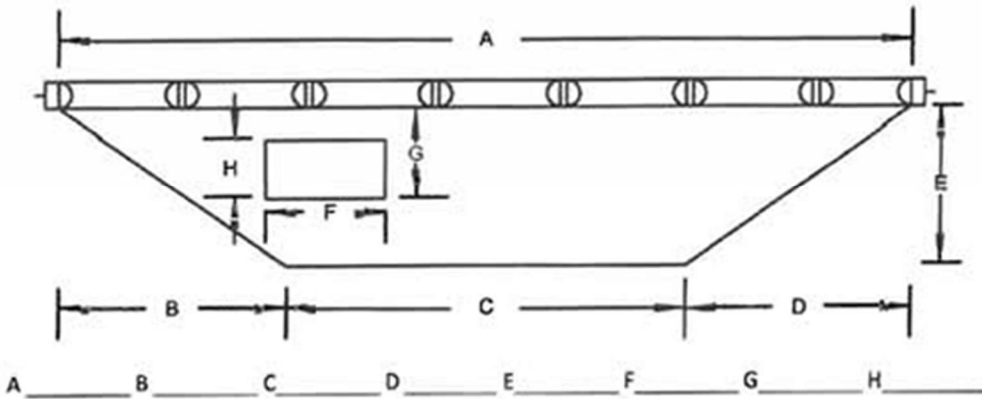
DOES WATER QUALITY REQUIRE METAL COMPONENTS IN STAINLESS STEEL? GRADE 304 \_\_\_\_\_  
GRADE 316 \_\_\_\_\_

NUMBER OF FLOW THRU WINDOWS \_\_\_\_\_ **NOTE:** THE GUIDELINE FOR WINDOW  
FLOWRATE IS 30 GPM/FT<sup>2</sup>

**ANCHORING INFORMATION:**

BAFFLE IS FURNISHED WITH ANCHOR LINE ATTACHMENT POINTS AT ENDS AND BETWEEN BAFFLE SECTIONS FOR  
LONG BAFFLES.

MAXIMUM LENGTH OF A SINGLE SECTION IS 135 FEET. **NOTE:** IF YOU REQUIRE ANCHORING HARDWARE, PLEASE  
PROVIDE DETAILS.



Please provide an overhead sketch of the basin, showing inlet and outlet locations.

*Click anywhere on image to download PDF version*

ENGINEERED TEXTILE PRODUCTS, INC. – P.O. BOX 7474 – MOBILE, ALABAMA 36670-0470  
1-800-222-8277 – FAX: 251-476-8001 – EMAIL: [sales@etpinfo.com](mailto:sales@etpinfo.com) – WEBSITE: [www.etpinfo.com](http://www.etpinfo.com)